

MODEL C91 RSA
(CNC STYLE)

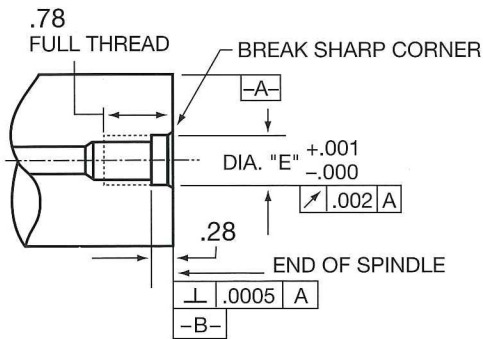
BEARINGLESS ROTARY COUPLERS

- **RSA – Retractable Straight Assembly**
- For CNC Spindles Where Tool Changers are Used and Coolant is Through-the-Spindle
- Retractable Piston Design
- Eliminates Spindle Vibration
- "Dry" Running Capability

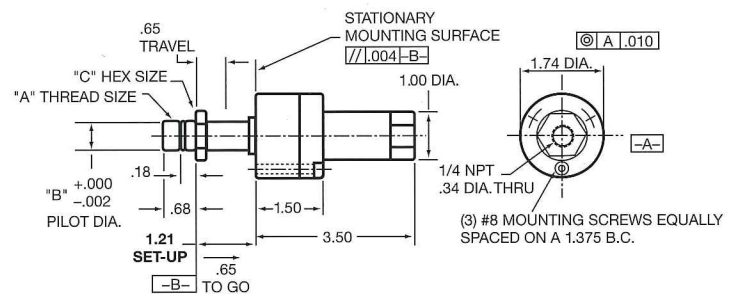
Bearingless fluid couplers have answered industry's call for a better, vibration-free, longer lasting high speed, high pressure coolant delivery device. The poor performance and short operating life of bearing type couplers has been

For coolant pressures up to 2000 psi at spindle speeds up to 25,000 rpm.

Spindle



Coupler



Note: Spindle tolerances must be maintained under working loads to assure proper operation.

MODEL#	A	B	C	E
C91 RSA 01	5/8-18 L.H.	.655	.94	.656
C91 RSA 02	5/8-18 R.H.	.655	.94	.656
C91 RSA 03	5/8-18 L.H.	.624	.88	.625
C91 RSA 04	5/8-18 R.H.	.624	.88	.625
C91 RSA 09	M16x1.5 L.H.	.707	.88	.708
C91 RSA 10	M16x1.5 R.H.	.707	.88	.708
C91 RSA 15	3/8-24 L.H.	.374	.56	.375
C91 RSA 16	3/8-24 R.H.	.374	.56	.375
C91 RSA 17	1/2-20 L.H.	.499	.68	.500
C91 RSA 18	1/2-20 R.H.	.499	.68	.500
C91 RSA 19	M10x1.0 L.H.	.437	.56	.438
C91 RSA 20	M10x1.0 R.H.	.437	.56	.438
C91 RSA 21	M12x1.25 L.H.	.529	.68	.530
C91 RSA 22	M12x1.25 R.H.	.529	.68	.530

eliminated. Bearingless couplers dramatically reduce the amount of coolant mist generated, and the total amount of coolant used through this "dry running" capability. Spindle downtime and maintenance are also reduced while increasing the overall efficiency of the machining process.

Repair Kit – C91 RSK (Including spindle adapter, coupler piston, spring and U-cup seal)



MANUTEC-BCI
6522 DIPLOMAT DR.
STERLING HEIGHTS, MI 48315
(586) 884-6377