

MODEL C91 NSA

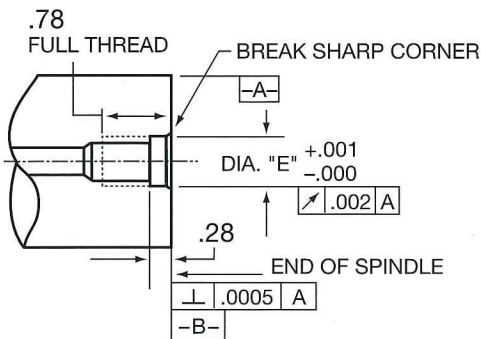
BEARINGLESS ROTARY COUPLERS

- **NSA – Narrow Straight Flow**
- For Stacking Applications when Centerline Distances are Narrow
- Creates No Flow Turbulence
- "Dry" Running Capability
- Suited for Drilling, Reaming, Boring and Milling Spindles

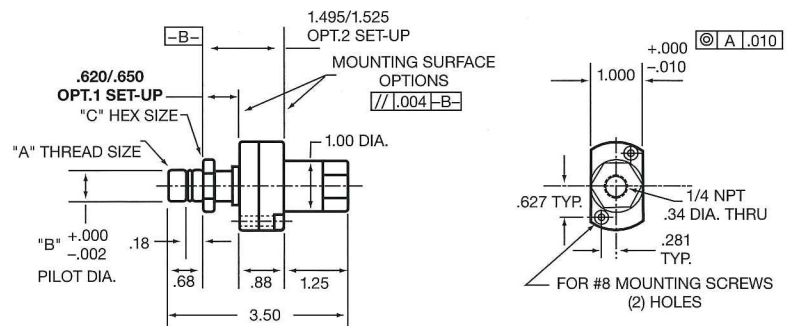
Bearingless fluid couplers have answered industry's call for a better, vibration-free, longer lasting high speed, high pressure coolant delivery device. The poor performance and short operating life of bearing type couplers has been

For coolant pressures up to 2000 psi at spindle speeds up to 25,000 rpm.

Spindle



Coupler



Note: Spindle tolerances must be maintained under working loads to assure proper operation.

MODEL#	A	B	C	E
C91 NSA 01	5/8-18 L.H.	.655	.94	.656
C91 NSA 02	5/8-18 R.H.	.655	.94	.656
C91 NSA 03	5/8-18 L.H.	.624	.88	.625
C91 NSA 04	5/8-18 R.H.	.624	.88	.625
C91 NSA 09	M16x1.5 L.H.	.707	.88	.708
C91 NSA 10	M16x1.5 R.H.	.707	.88	.708
C91 NSA 15	3/8-24 L.H.	.374	.56	.375
C91 NSA 16	3/8-24 R.H.	.374	.56	.375
C91 NSA 17	1/2-20 L.H.	.499	.68	.500
C91 NSA 18	1/2-20 R.H.	.499	.68	.500
C91 NSA 19	M10x1.0 L.H.	.437	.56	.438
C91 NSA 20	M10x1.0 R.H.	.437	.56	.438
C91 NSA 21	M12x1.25 L.H.	.529	.68	.530
C91 NSA 22	M12x1.25 R.H.	.529	.68	.530

eliminated. Bearingless couplers dramatically reduce the amount of coolant mist generated, and the total amount of coolant used through this "dry running" capability. Spindle downtime and maintenance are also reduced while increasing the overall efficiency of the machining process.

Repair Kit – C91 SK (Including spindle adapter, coupler piston, spring and U-cup seal)



MANUTEC-BCI
 6522 DIPLOMAT DR.
 STERLING HEIGHTS, MI 48315
 (586) 884-6377